



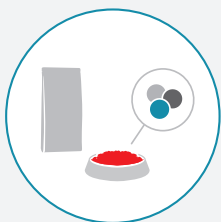
DERMATOLOGY HEALTH



WHAT IS A FOOD ALLERGY?



The immune system protects your dog against external pathogens such as viruses and bacteria.



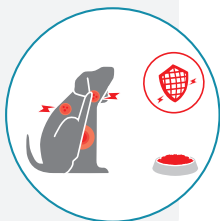
Most pet diets contain **large, intact proteins** such as those found in beef, fish and lamb.



In the case of a food allergy, **the immune system reacts** to the harmless, large proteins that healthy (non-allergic) dogs are able to tolerate without any problem.



The immune system **sometimes mistakes these large proteins for a potential threat**. The immune system then reacts **by triggering an allergic reaction**.



This reaction causes discomfort for the dog, such as **itching, skin redness and, in some cases, loose stools or vomiting**.



Royal Canin uses hydrolyzed protein sources in the **HYDROLYZED PROTEIN** and **ANALLERGENIC** diets to help control food allergies.



Hydrolyzing a protein means cutting the large protein molecules **into smaller pieces, without losing any of the nutrition** present in the intact protein.



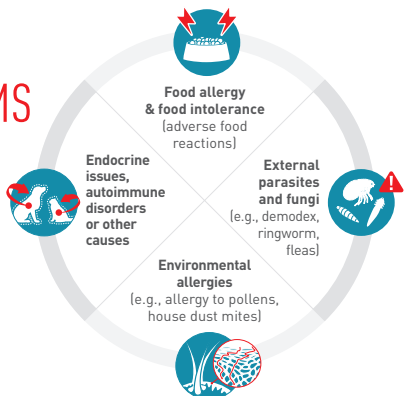
Because of the small size of these protein pieces, the immune system is **LESS able to recognize them as a threat**.



The use of hydrolyzed protein in the **HYDROLYZED PROTEIN** and **ANALLERGENIC** diets **minimizes the exposure** (bringing your dog's skin, coat and digestive system back to normal).

SKIN PROBLEMS IN DOGS

are often only a sign of what's going on beneath the surface.





IF YOUR VETERINARIAN SUSPECTS FOOD ALLERGY

They will prescribe the appropriate medical treatment including a tailor-made nutritional solution such as:

FOOD ELIMINATION TRIAL + FOOD ALLERGIES + GASTROINTESTINAL HEALTH

[S/O
INDEX]

DRY



ANALLERGENIC



**HYDROLYZED PROTEIN
MODERATE CALORIE**



**HYDROLYZED PROTEIN
HP**



**HYPOALLERGENIC
HYDROLYZED PROTEIN
SMALL DOG**

WET



ANALLERGENIC

Provides the best chance for diagnosis and successful long-term food allergy management.

HYDROLYZED PROTEIN

Minimizes the exposure to proteins that may cause an allergic reaction in your dog.

FOOD ALLERGY+
PUPPY+
GASTROINTESTINAL
HEALTH

FOOD ALLERGIES
+ WEIGHT
MANAGEMENT

FOOD ALLERGIES
+ CHRONIC KIDNEY
DISEASE

FOOD ALLERGIES
+ URINARY HEALTH



[S/O]
INDEX]

HYDROLYZED PROTEIN
PUPPY

SATIETY +
HYDROLYZED PROTEIN

RENAL SUPPORT +
HYDROLYZED PROTEIN

URINARY SO +
HYDROLYZED PROTEIN



WITH YOUR VETERINARIAN'S APPROVAL,
HYDROLYZED PROTEIN TREATS ARE THE
PERFECT COMPLEMENT TO A HYDROLYZED
PROTEIN DIET.



IF YOUR VETERINARIAN SUSPECTS FOOD ALLERGY

They will prescribe the appropriate medical treatment including a tailor-made nutritional solution such as:

FOOD ALLERGIES

DRY



WET



SELECTED PROTEIN PD
(POTATO AND DUCK)

SELECTED PROTEIN RC
(RICE AND FISH)

FOOD ALLERGIES



VEGETARIAN



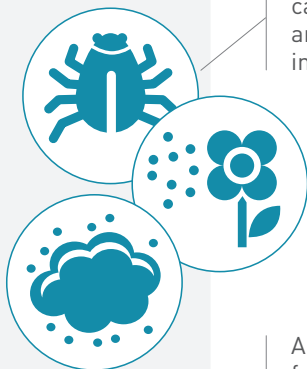
WITH YOUR VETERINARIAN'S APPROVAL, HYDROLYZED PROTEIN TREATS ARE THE PERFECT COMPLEMENT TO A SELECTED PROTEIN DIET.

TIPS FOR SUCCESSFUL MANAGEMENT OF FOOD ALLERGIES IN DOGS

- ✓ Make sure everyone knows that your dog must not be offered anything except the food that has been prescribed by your veterinarian. That means no snacks, treats or leftovers from the table, including fruits and vegetables.
- ✓ Store your dog's food in the original bag to prevent contamination, and keep the bag sealed between meals.
- ✓ If your dog likes treats, talk to your veterinarian to see if ROYAL CANIN® Canine Hydrolyzed Protein Treats are appropriate.
- ✓ Wash your hands thoroughly before feeding your dog, especially if you have been in contact with human or pet food.
- ✓ If you have multiple pets, monitor meal time to ensure that your dog with food allergies is not in contact with other pet food.



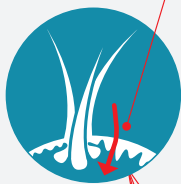
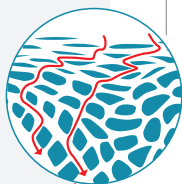
WHAT IS ENVIRONMENTAL ATOPIC DERMATITIS?



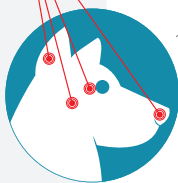
Allergens

can be found in pollen, animal dander, plants, insects, dust, etc.

Abnormal skin barrier function allows the **allergen to break through the skin barrier** and stimulate the immune system.



The inflammation triggered by atopic dermatitis can cause **skin redness, rashes, chronic otitis, darkening of the skin and recurrent infections.**





IF YOUR VETERINARIAN SUSPECTS ENVIRONMENTAL ATOPIC DERMATITIS,

They will prescribe the appropriate medical treatment that includes a tailor-made nutritional solution such as:

SKIN SUPPORT



DRY

SKIN SUPPORT

TRANSITIONING YOUR PET TO A NEW FOOD



DAYS 1 + 2

75% current food
25% **new** food



DAYS 3 + 4

50% current food
50% **new** food



DAYS 5 + 6

25% current food
75% **new** food



DAY 7

100% **new** food

WE RECOMMEND AT LEAST A SEVEN-DAY TRANSITION WHEN STARTING A NEW DIET.

Dogs may reject a new food if it is not introduced slowly by transitioning over a period of 7-10 days. To transition your pet safely to a new formula, we suggest slowly mixing the new food with the existing food in gradually increasing amounts.

ROYAL CANIN DIETS WILL HELP YOUR DOG GET BACK TO A BETTER QUALITY OF LIFE

Once the underlying cause of the itching has been identified, your veterinarian can then recommend the correct ROYAL CANIN® diet for your dog's long-term nutritional needs.

And you can look forward to your dog getting back to their normal self again.



Find out more about nutrition for allergic dogs at
www.royalcanin.com