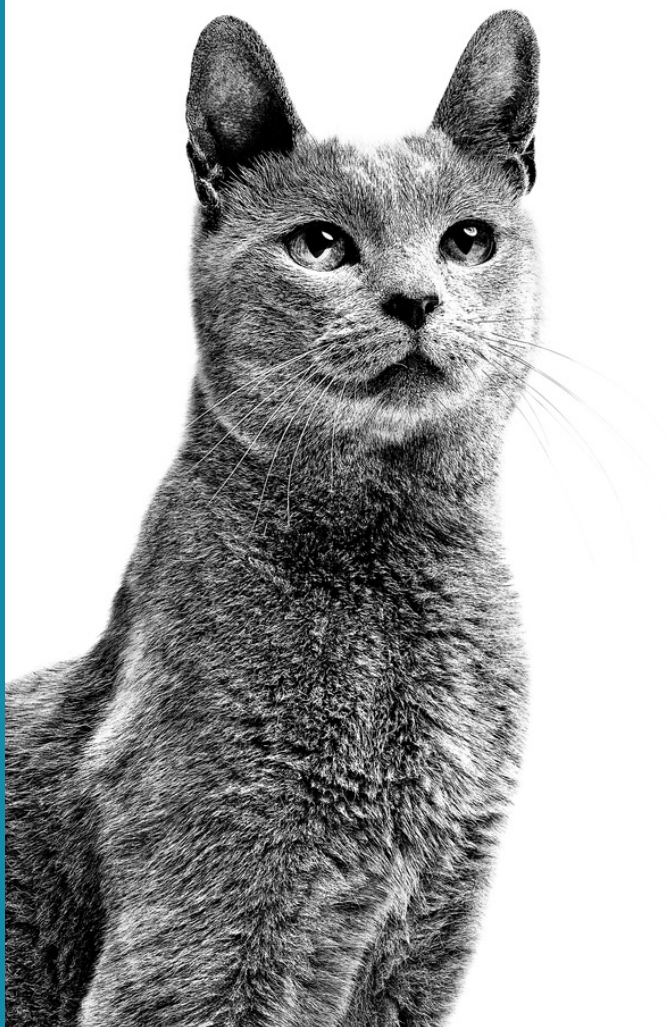




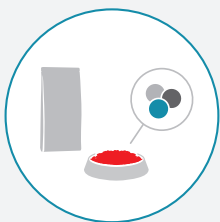
# DERMATOLOGY HEALTH



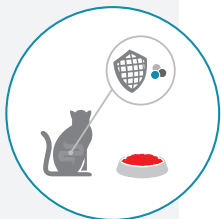
# WHAT IS A FOOD ALLERGY?



The immune system protects your cat against external pathogens such as viruses and bacteria.



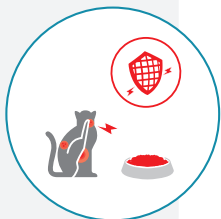
Most pet diets contain **large, intact proteins**, such as those found in beef, fish, and chicken.



In the case of a food allergy, **the immune system reacts** to the harmless large proteins that healthy (non-allergic) cats are able to tolerate without any problem.



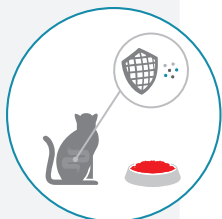
The immune system **sometimes mistakes these large proteins for a potential threat**. The immune system then reacts, **by triggering an allergic reaction**.



This reaction causes discomfort for the cat such as **itching, skin redness, and in some cases, loose stools or vomiting**.



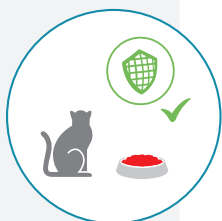
ROYAL CANIN® uses hydrolyzed protein sources in the **HYPOALLERGENIC HYDROLYZED PROTEIN** and **ANALLERGENIC** diets to help control food allergies.



Hydrolyzing a protein means cutting the large protein molecules **into smaller pieces, without losing any of the nutrition** present in the intact protein.



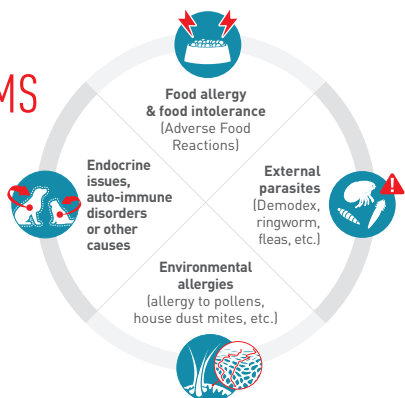
Thanks to their small size, the immune system is **LESS able to recognize these tiny protein pieces as a threat.**



The use of hydrolyzed protein in the **HYPOALLERGENIC HYDROLYZED PROTEIN** and **ANALLERGENIC** diets minimizes your cat's exposure to proteins that may cause an allergic reaction.

## SKIN PROBLEMS IN CATS

are often only a sign of what's going on beneath the surface.





## IF YOUR VETERINARIAN SUSPECTS A FOOD ALLERGY;

You will be prescribed an appropriate medical treatment including a tailor-made nutritional solution such as:

**FOOD ELIMINATION TRIAL  
+ FOOD ALLERGIES  
+ GASTROINTESTINAL HEALTH**

### ANALLERGENIC

[S/O]  
INDEX



### HYPOALLERGENIC HYDROLYZED PROTEIN

[S/O]  
INDEX



DRY

WET

### ANALLERGENIC

Provides the best chance for diagnosis and successful long term food allergy management.

### HYDROLYZED PROTEIN

Minimizes the exposure to proteins that may cause an allergic reaction in your cat.

**FOOD ALLERGIES  
+ GASTROINTESTINAL  
HEALTH**

**SELECTED PROTEIN PD**  
(PEA AND DUCK)



**FOOD ALLERGIES  
+ CHRONIC KIDNEY  
DISEASE**

**RENAL SUPPORT +  
HYDROLYZED PROTEIN**



**FOOD ALLERGIES  
+ URINARY HEALTH**

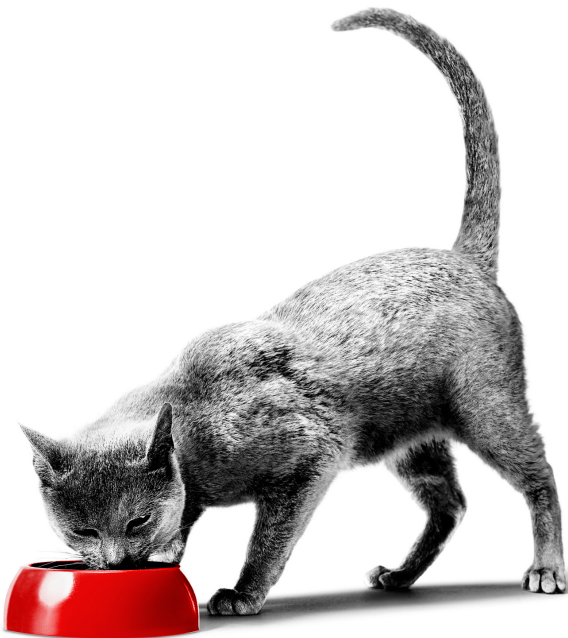
**URINARY SO +  
HYDROLYZED PROTEIN**

**[S/O  
INDEX]**



# TIPS FOR SUCCESSFUL MANAGEMENT OF FOOD ALLERGIES IN CATS:

- ✓ Make sure everyone knows that your cat must not be offered any other food than what has been prescribed by your veterinarian. That means no snacks, treats, or left-overs from the table including fruits and vegetables.
- ✓ Store your cat's food in the original bag to prevent contamination and keep the bag sealed between meals.
- ✓ Wash your hands thoroughly before feeding your cat, especially if you have been in contact with human or pet food.
- ✓ If you have multiple pets, monitor meal time to ensure your cat with food allergies is not in contact with other pet food.



# TRANSITIONING YOUR PET TO A NEW FOOD



## DAYS 1 + 2

75% current food

25% **new** food



## DAYS 3 + 4

50% current food

50% **new** food



## DAYS 5 + 6

25% current food

75% **new** food



## DAY 7

100% **new** food

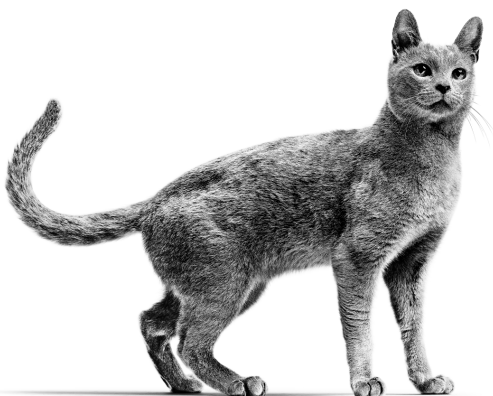
**WE RECOMMEND AT LEAST A SEVEN-DAY TRANSITION WHEN STARTING A NEW DIET.**

Cats may reject a new food if it is not introduced slowly by transitioning over a period of 7 – 10 days. To effectively transition your pet to a new formula, we suggest slowly mixing the new food in with the existing food in gradually increasing amounts.

# ROYAL CANIN® DIETS WILL HELP YOUR CAT GET BACK TO A BETTER QUALITY OF LIFE

Once the underlying cause of itching has been identified, your veterinarian can then recommend the correct ROYAL CANIN® diet for your cat's long-term nutritional needs.

And you can look forward to your cat getting back to their normal self again.



Find out more about nutrition for allergic cats at  
[www.royalcanin.com](http://www.royalcanin.com)