



KIDNEY HEALTH



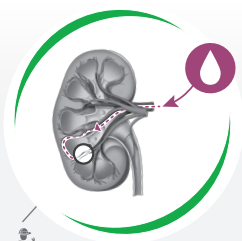
WHAT IS CHRONIC KIDNEY DISEASE?

Following examination by your veterinarian, diagnostic tests may show that your dog is suffering from chronic kidney disease even before there are any visible symptoms.

This common disorder among older dogs is related to kidney deterioration and may have a variety of causes, including hereditary malformation, kidney infection, inflammation, toxins, and others.

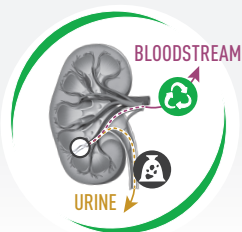
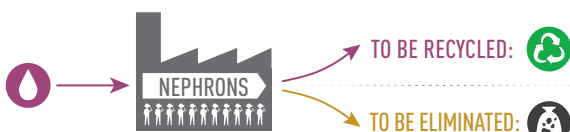
Kidneys function like a factory that filters and recycles resources for the body, as illustrated below:

HEALTHY KIDNEY



NEPHRONS

Blood is filtered
in factories by nephrons
(the workers).



Nephrons sort these substances:

- to be **recycled**, returning them to the bloodstream,
- and others to be **eliminated** in the **urine**

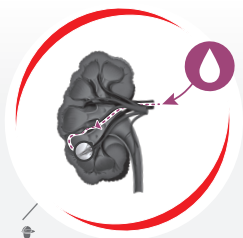
KEY:



Waste produced by the body (urea, creatinine, etc.)

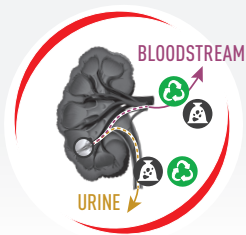
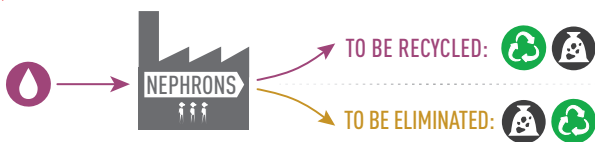


DYSFUNCTIONAL KIDNEY WITH IMPAIRED FUNCTION



NEPHRONS

Chronic kidney disease results in a reduced number of nephrons working to recycle.



- **More water and proteins are eliminated** as kidney function declines.
- **Unwanted waste accumulates** in the bloodstream.

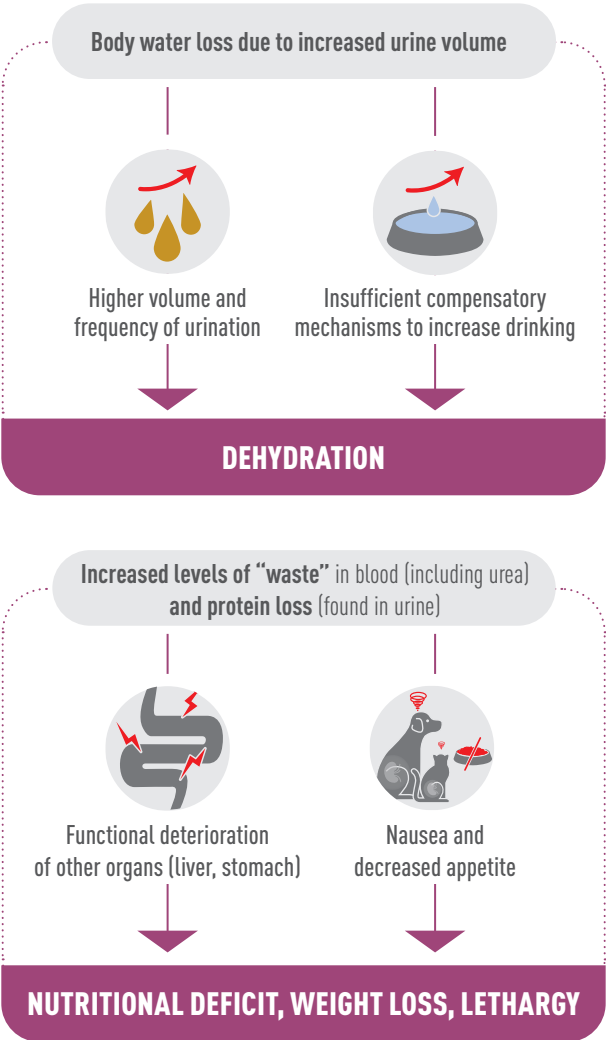


Substances to be recycled (proteins, mineral salts, etc.)

WHAT ARE THE EFFECTS ON THE BODY?

Hidden in its early stages, **chronic kidney disease** becomes more visible as it advances, at which point you may notice that your dog drinks and urinates more frequently, while progressively losing their appetite.

Where do these symptoms come from?



ROYAL CANIN® TAILORED NUTRITION

Royal Canin® is proud to offer your dog a wide range of **RENAL SUPPORT** formulas with different aromatic profiles and textures to encourage appetite and to support kidney health.

EARLY KIDNEY DISEASE

A complete range to support the kidneys **at the first stages of impairment.**

DRY



CANNED



RENAL SUPPORT
EARLY CONSULT

WHY ARE THERE SO MANY FLAVOURS, TEXTURES, AND AROMATIC PROFILES?

Food aversion is a challenge and a hallmark of chronic kidney disease.

Appropriate nutrition has been shown to improve the quality and quantity of life in dogs with chronic kidney disease. However, it is necessary that dogs are willing to eat in order to derive these benefits from the diet.

Since every meal counts when renal function declines, you can alternate between formulations and therefore always have appropriate nutritional options for your dog.

ADVANCED KIDNEY DISEASE



RENAL SUPPORT A
(Aromatic)



RENAL SUPPORT S
(Savoury)



RENAL SUPPORT D
(Delectable)



RENAL SUPPORT E
(Enticing)

TWO CONDITIONS. ONE SOLUTION. NO COMPROMISE.

Royal Canin® products offer a single nutritional solution to help manage your dog's multiple needs.

**EARLY KIDNEY DISEASE
+ FOOD ALLERGIES**



**HYDROLYZED PROTEIN
MODERATE CALORIE**

**EARLY KIDNEY DISEASE
+ JOINT HEALTH**



**ADVANCED MOBILITY
SUPPORT**

**EARLY KIDNEY DISEASE
+ URINARY HEALTH**



**URINARY SO
AGING 7+**

**ADVANCED KIDNEY DISEASE
+ FOOD ALLERGIES**



**RENAL SUPPORT
+ HYDROLYZED PROTEIN**

HELP MAINTAIN YOUR DOG'S QUALITY OF LIFE WITH OPTIMAL NUTRITION!



USEFUL TIPS ON HOW TO OPTIMIZE QUALITY OF LIFE

LIFESTYLE

- ✓ Visit your veterinarian for continual monitoring and support
- ✓ Ensure fresh and clean water is available at all times



NUTRITION



**CONTINUE FEEDING THE DIET
RECOMMENDED BY YOUR VET**



**STIMULATE YOUR DOG'S APPETITE BY
VARYING TASTE, SMELL AND TEXTURE.**



Find out more about
Veterinary Health Nutrition for dogs at
www.royalcanin.com